

Active Fin Stabilizers

Models 162, 174, 252, 254, 302, 320, 360, 420, 525

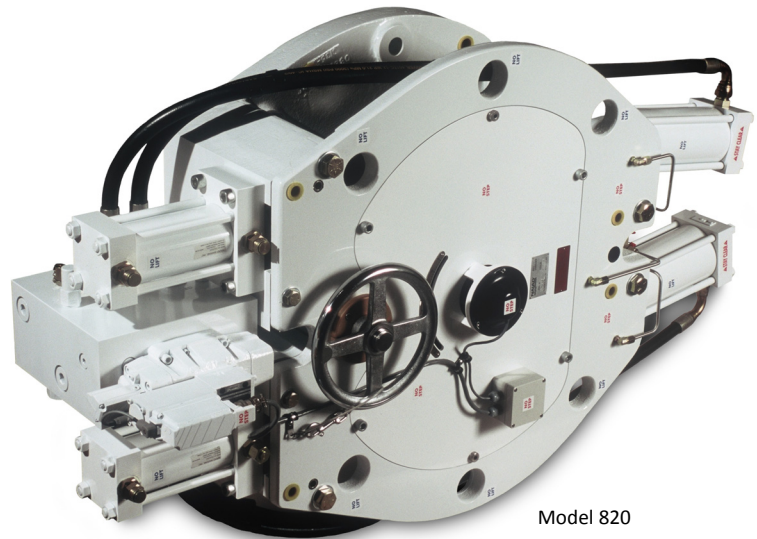
575, 621, 720, 820, 925, 1050, 1200 & 1400

The industry standard for superior performance, quality, reliability, long-term support and overall value. NAIAD[®] Stabilizers are the equipment of choice installed in thousands of vessels in demanding commercial and military ship applications as well as luxury yachts of all sizes.

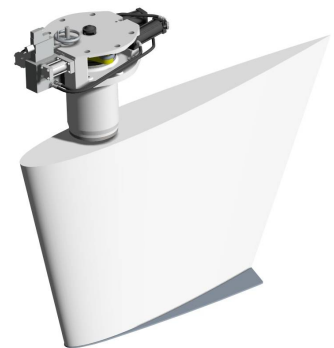
With more systems in service than any other brand, Naiad Dynamics product designs are a refined evolution earned from real-life experience, analysis, and constant development. Install Naiad, Instill Confidence™

Fin Actuator Assembly Features

- ✓ Highest quality materials and workmanship. Major components machined to US military standards in our ISO 9001:2008 certified facility alongside aerospace machined parts.
- ✓ Industry first heavy-duty tapered roller bearing construction. Designed for life; no main bearing replacement required. Compare to inexpensive and wear-prone plain bearings/bushings.
- ✓ Factory assembled and tested. No disassembly required at installation.
- ✓ Triple lower shaft seals encased in an easily accessible housing.
- ✓ Industry best double spherical Rod End bearings. Roller bearings (not bushings) at all pivoting locations.
- ✓ Proven hydrodynamically-efficient foil section designs. Tip fences proportionately sized and validated for performance.



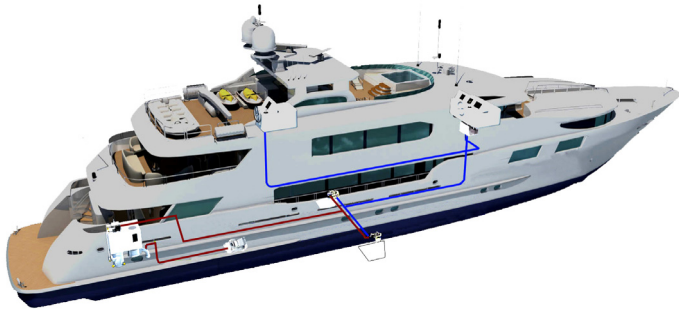
Model 820



- ✓ Advanced composite fin construction is galvanically inert and features an encapsulated stainless steel insert with precision machined self-locking keyless taper. Steel fins optional.
- ✓ Keyless taper allows freedom to install the NAIAD Assembly in any 360° orientation to simplify installation and maximize accessibility, plus allows the fins to be aligned and realigned in any desired position to suit hull flow lines. Hydraulic taper lock.
- ✓ First choice among discriminating yacht owners and ship builders throughout the world.

Digital Control System

- ✓ Advanced & proven fully proportional automatic Angle-Velocity-Acceleration (AVA™) closed loop control system for maximum roll reduction performance in any seaway with minimum drag.
- ✓ Resonant roll reduction typically 90%. Static heel correction. Sensitivity adjustment. Automatic fin limiting and centering. DATUM™ Adaptive Technology self-tunes to optimize performance.
- ✓ Enhanced course-keeping, reduced rudder drag typically improves overall destination time and fuel efficiency.
- ✓ DATUM™ is the world's first purely digital fin stabilizer control system operating on a CANbus distributed network.
- ✓ Shock tested and naval ship approved.



Hydraulic Systems

Complete hydraulic systems standard or tailored for specific applications. From relatively simple pressure compensated pump systems to advanced PLC controlled systems that efficiently integrate all shipboard hydraulic equipment. Our specialist hydraulic engineers specify all necessary components, source and oversee in-house testing, and supply fully detailed drawings. Naiad's standard range of quiet Powerpacks are also available to power hydraulic systems.



Outstanding Service and Support

Naiad Dynamics stands behind every system sold with its superb Limited Warranty. NAIAD® products are supported worldwide by our six sales and service centers and mobile fleet, and by our comprehensive Authorized Dealer Network with locations in key yachting regions for fastest response and guaranteed satisfaction. Spare parts are usually in-stock and ship within 24 hours, and our state-of-the-art in-house manufacturing facility ensures quick turnaround on parts throughout the life of the system.



DATUM™ graphical display panel options, each with intuitive multi-page display screens.

Application Guidelines (this Series)

<i>Naiad Model</i>	<i>OAL Feet (Meters)</i>	<i>Displacement Max. (Approx)</i>	<i>Fin Sizes Sq. Feet (Sq. M.)</i>
575	135 - 170 (41 - 52)	675 S. Tons (610 M Tons)	16 - 45 (1.49 - 4.18)
621	140 - 180 (42 - 55)	750 S. Tons (680 M Tons)	19 - 45 (1.76 - 4.18)
720	150 - 200 (45 - 61)	1000 S. Tons (910 M Tons)	22 - 53.8 (2.04 - 5.00)
820	180 - 280 (54 - 85)	1500 S. Tons (1360 M Tons)	45 - 75.3 (4.18 - 7.00)
925	300 - 500 (90 - 152)	2000 S. Tons (1800 M Tons)	53.8 - 86.1 (5.00 - 8.00)

NAIAD DYNAMICS US, INC.

Connecticut, USA
T: +1 203 929 6355
F: +1 203 929 3594

Maryland, USA
T: +1 301 690 2010
F: +1 301 690 2187

Florida, USA
T: +1 954 797 7566
F: +1 954 791 0827

NAIAD DYNAMICS UK, LTD

Southampton, England
T: +44 (0) 2392 53 9750
F: +44 (0) 2392 53 9764

NAIAD DYNAMICS HOLLAND, BV

Maastricht, Netherlands
T: +31 (0) 43 604 9200
F: +31 (0) 43 363 6200



www.naiad.com
sales@naiad.com

NAIAD DYNAMICS: The Science of Stabilization®